

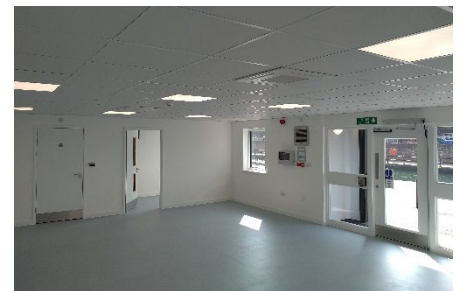
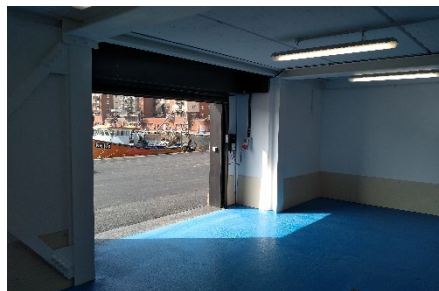
**BUILDING 2  
SOVEREIGN HARBOUR  
FISHING QUAY  
EASTBOURNE**

Following the construction of Building 1, this phase comprises a two-storey building providing a ground floor visitor centre and five lettable workshop units. The design again reflects the coastal fish smoking sheds which are still found locally along the coast.



The building was constructed with strip foundations and concrete pads with a ground bearing concrete slab. The superstructure is steel frame with timber stud infill, precast plank first floor and a timber rafter roof.

Any risks associated with working in close proximity to deep water was mitigated by the use of the sustainable water filled Jersey barrier and fence system along the sea wall. The crane lifts were kept at a safe distance, so as not to surcharge additional loads on to the wall.



CLIENT	Eastbourne U10 Fishermans CIC	Bexhill-on-Sea
EMPLOYER'S AGENT	Gradient Consultants	Eastbourne
DESIGN & BUILD TEAM	Sunninghill Construction in conjunction with: Architect, Spitfire Architects Structural Engineer, Stephen Wilson Partnership M&E Consultant, PJR	Eastbourne Polegate Brighton