

**BUILDING 1  
SOVEREIGN HARBOUR  
FISHING QUAY  
EASTBOURNE**

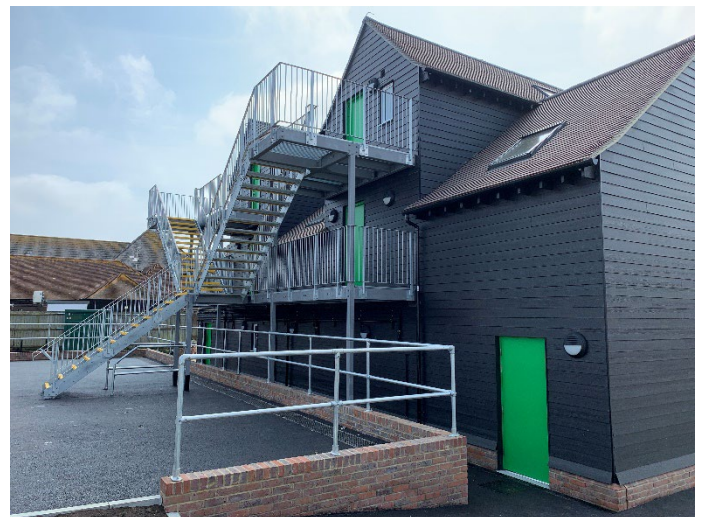
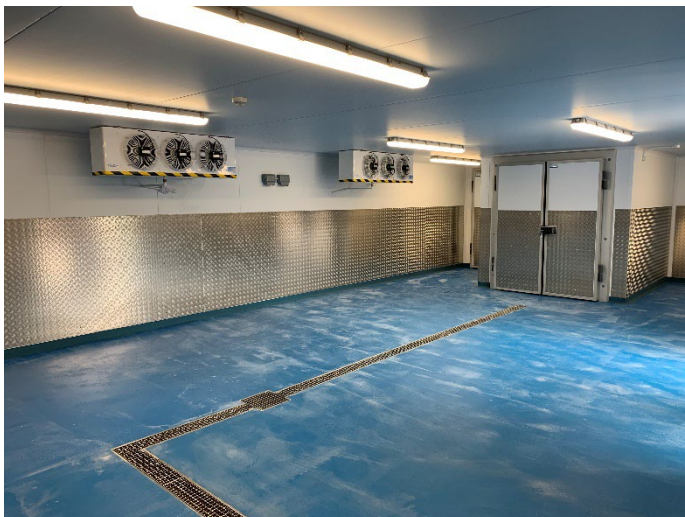
A three-storey building has been constructed directly on the fishing quay to provide a permanent base for handling and processing fish from the Eastbourne fishing fleet. It also incorporates a retail counter, enabling direct local fish sales. The building has been designed to replicate a traditional weatherboard building, as found locally along the coast.



A large proportion of the ground floor has been fitted out as a cold storage facility with a dedicated ice room. The external condensers/mechanical plant ensure a temperature-controlled environment. The first floor includes a fish smoking facility, welfare, kitchen and storage facilities, with traditional style wharf loading bays enabling pallets and crates of fish to be placed and lowered by forklift. The second floor provides offices for use by the fishing fleet with access via an external steel staircase.

The building was constructed using strip foundations and concrete pads, a structural steel frame with timber cladding and a pitched timber roof clad with traditional style clay tiles. Groundworks and civil engineering carried out by the company's in-house department included the construction of a heavy goods vehicle access runway, parking, and drainage which included a substantial storm water attenuation tank.

Upon completion, Sunninghill was invited to negotiate the contract for the construction of an adjacent second facility.



CLIENT	Eastbourne U10 Fishermans CIC	Bexhill-on-Sea
QUANTITY SURVEYOR	Gradient Consultants	Eastbourne
ARCHITECT	Spitfire Architects	Eastbourne
M&E CONSULTANT	PJR Services	Brighton
STRUCTURAL ENGINEER	Stephen Wilson Partnership	Polegate