

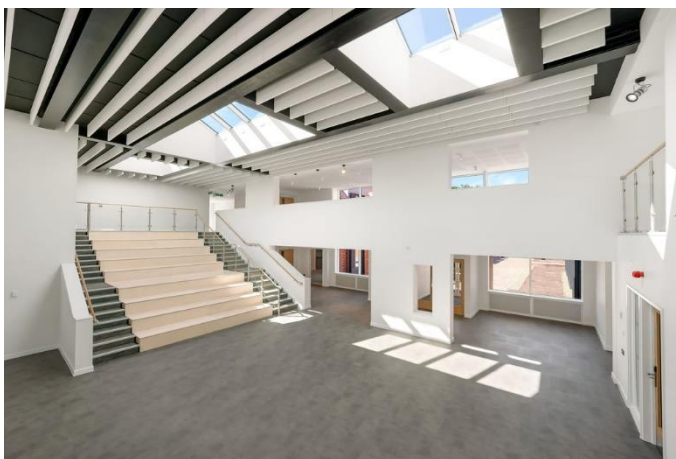
**BEDE'S SENIOR SCHOOL  
UPPER DICKER  
EAST SUSSEX**

Bede's is a coeducational independent school for 13-18 year olds situated within an area of Outstanding Natural Beauty and Special Scientific Interest. The project comprised a two storey 60 bed boarding house, communal areas and staff accommodation together with extensive external works. The construction was carried out in two phases, due to the intervening



The first phase, comprising substructure and ground floor slab, carried out by the Sunninghill Groundworks and Civil Engineering Department, included the diversion of existing services, the installation of a new foul and storm water drainage system and piled and trench fill foundations. The second phase, the superstructure, comprised load bearing masonry and steel frame with curtain walling to the atrium; the roof a mixture of clay tiles and single ply membrane.

The new accommodation is situated within the heart of the school campus, with the through road passing classrooms and communal areas. Weekly school meetings and regular liaison with the housemasters ensured pupil and staff safety throughout.



CLIENT	Bede's School	Upper Dicker
EMPLOYER'S AGENT	MacConvilles	Hove
DESIGN & BUILD TEAM	Sunninghill Construction in conjunction with: Architect, LCE Architects (Phase 1) Liam Russell Architects (Phase 2) Structural Engineer, QED M&E Consultant, Delta Green	Brighton Hove Lewes