

YMCA SPORTS AND COMMUNITY CENTRE REDHILL, SURREY

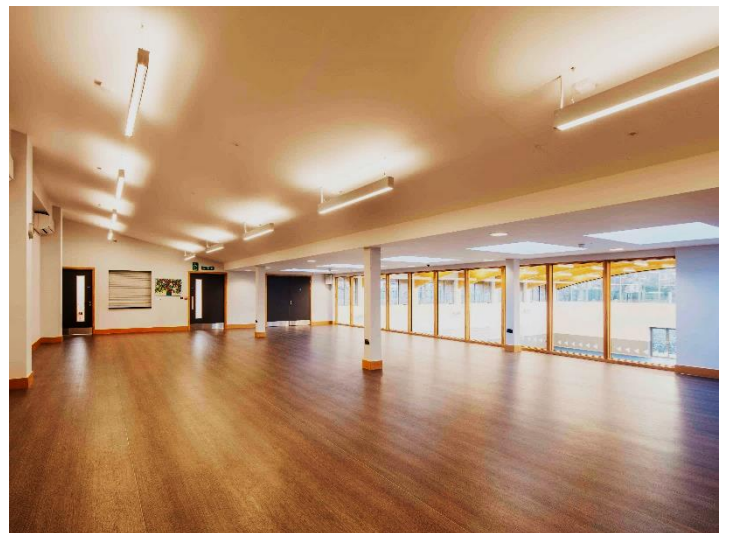
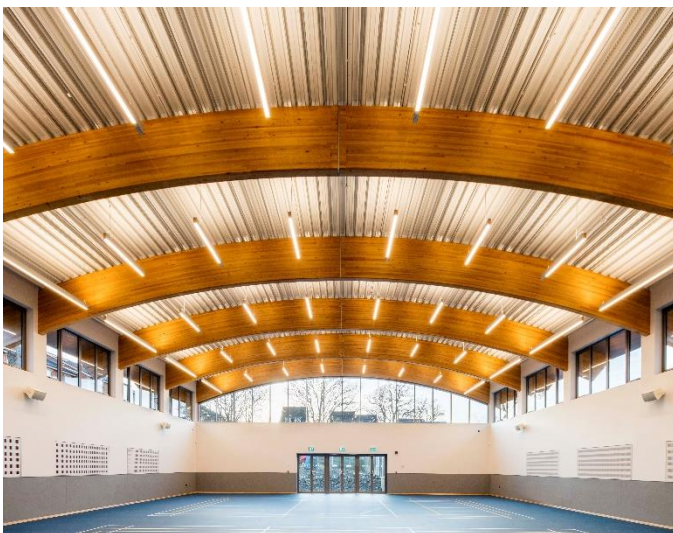
To meet an increasing demand, the centre has been extended and part refurbished to provide an inclusive sports facility giving adults with disabilities and long term ill health the opportunity to benefit from physical activity and sport.

The facilities include two bocchia courts for wheelchair players and a first floor mezzanine café and viewing area together with ancillary accommodation which includes new and refurbished WCs and changing areas.



Construction is steel frame with glulam beams with a highly insulated metal standing seam curved roof with clerestory glazing. Foundations and external works, undertaken by the Sunninghill in-house Groundworks and Civil Engineering Department, included reinforced pad and beam foundations, block paved paths and ramps together with substantial internal and external drainage.

With the existing facilities remaining open throughout the building works, the safety of YMCA staff and users remained a priority at all times.



CLIENT
EMPLOYERS AGENT
DESIGN & BUILD TEAM

YMCA East Surrey
Qubed
Sunninghill Construction in conjunction with
Architect, Burns Guthrie & Partners
(design by Christian Froggatt Architects)
Structural & Civil Engineer, Buxton Associates
M&E Consultant, Delta Green)
(design by Michael Jones & Associates)

Redhill
Reigate
Maidstone
Mitcham
Lewes