

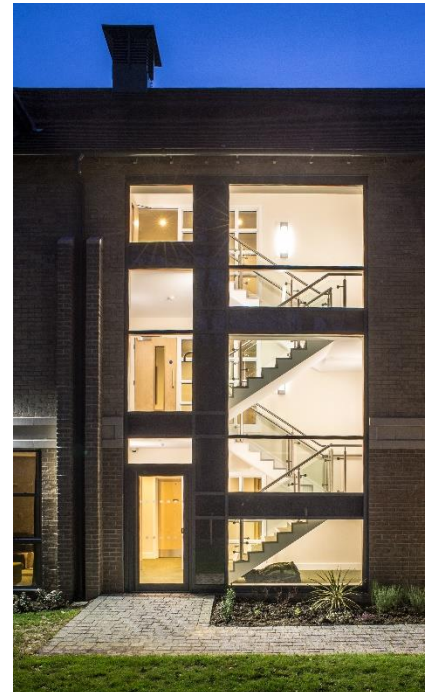
**WORTH SCHOOL
TURNERS HILL
WEST SUSSEX**

Worth School is a Catholic Benedictine co-educational boarding and day school set alongside Worth Abbey and situated within the High Weald Area of Outstanding Natural Beauty.



The new St Bede's Boarding House comprises a part two and part three storey boarding house for 56 pupils together with associated social areas, and residential accommodation for two teaching staff and their families. Of traditional construction the new building has been designed with architectural reference to the main historic buildings. The elevations are primarily brick clad in multi stock bricks with clay tiles on the pitched roof. Re-constituted stone has been used as a secondary facing material within the façade. The roof covering over the glazed linking section on the three storey element comprises single ply membrane with standing seams.

Extensive external works, which were carried out by the Company's in-house Groundworks and Civil Engineering Department, include the construction of new roads, car parking area and hard landscaping.



CLIENT	Worth Abbey	Turners Hill
EMPLOYERS AGENT	F T Allen	Worthing
ARCHITECT	Miller Bourne	Hove
STRUCTURAL ENGINEER	Tully De'Ath Consultants	Forest Row
M&E CONSULTANT	Chalbrook Services	Purley