

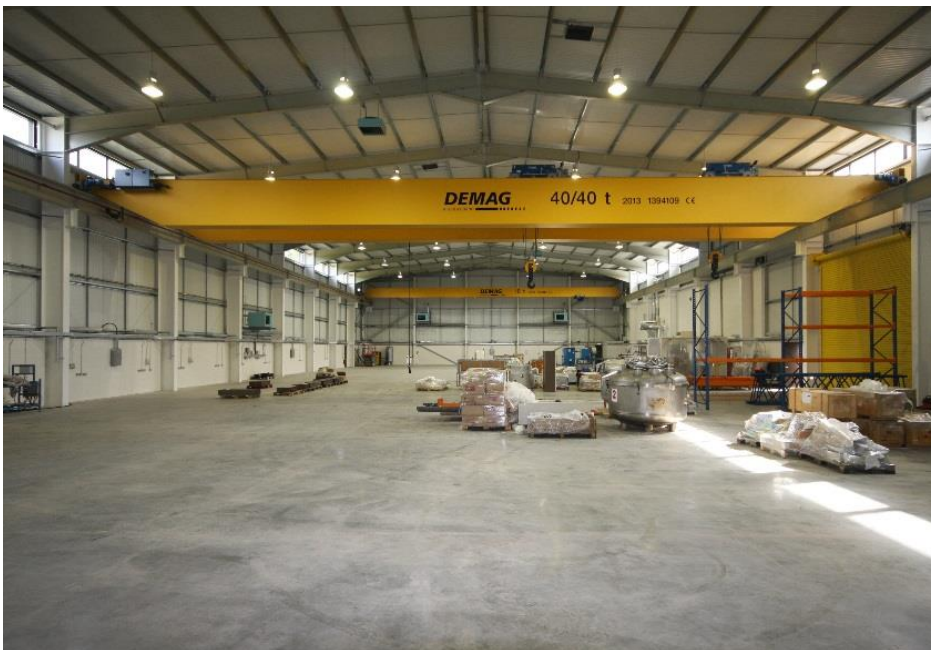
TESLA ENGINEERING STORRINGTON WEST SUSSEX

Founded in 1973, Tesla Engineering designs and manufactures resistive and superconducting electromagnets for science, medicine and industry.



With a requirement for expansion, a new building has been constructed opposite the existing Tesla premises and designed to be in keeping with the neighbouring industrial estate. Work commenced with the installation of a new culvert to enhance the existing access over a stream, followed by a bulk dig with soil stabilisation to hard landscaped areas. Following the major excavation works, which included the removal of a substantial seam of rock, a heavily engineered timber crib retaining structure was installed. The supported excavated face is in excess of 4m. A sealed and welded drainage system was installed over the part of the site which was formerly a rubbish tip.

The steel framed building which includes offices on two floors has an eaves height of 9.9m to accommodate the installation of 40 tonne and 10 tonne gantry cranes. External works included the construction of a new access road, parking for cars and lorries, with provision for lorry turning, and extensive soft landscaped areas. Groundworks and civil engineering were undertaken by the Company's in-house Groundworks and Civil Engineering Department with support from its established supply chain.



CLIENT

Tesla Engineering

Storrington

EMPLOYERS AGENT

Capita

London

DESIGN & BUILD TEAM

Sunninghill Construction in conjunction with:

Structural Engineer, Evans & Langford

Maidstone

M&E Consultant, PJR Services

Brighton