

**BOX HILL SCHOOL
MICKLEHAM
DORKING**

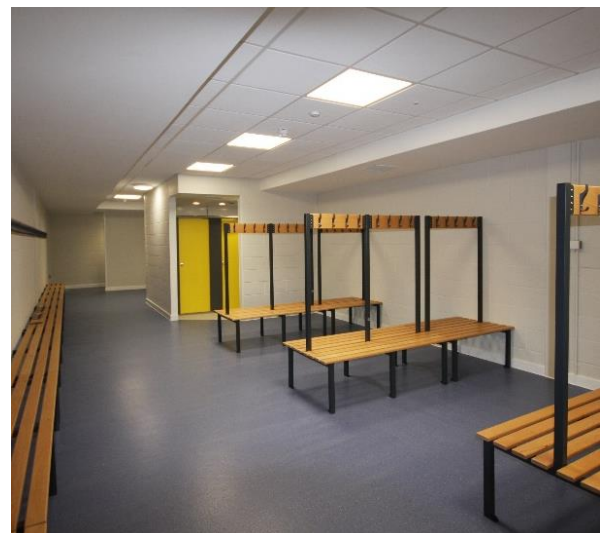
A new multi-use sports hall accommodating 4 badminton courts and a viewing gallery has been constructed at Box Hill School, an independent co-educational day and boarding school. Facilities also include changing rooms, gym, classroom and ancillary accommodation. An unusual feature is a rooftop tennis court, situated above the changing rooms.



Work commenced with a deep excavation supported by a contiguous piled retaining wall with reinforced capping beam, the surplus excavated material being reused to level part of the adjacent ground and increase the area of the sports field. A temporary access road was formed to the rear of the building to enable the installation of the crane and delivery of materials.

The sports hall is steel framed with concrete strip and pad foundations, Kingspan insulated panels and cedar boarding. The changing room roof comprises metal decking with reinforced concrete topping and Remmers water proofing system topped with the tennis court surfacing.

Groundworks and civil engineering, which were carried out by the Company's in-house department, include the construction of a MUGA and footpaths.



| | | |
|---------------------|-----------------------------------------------------------------------------------------------------------------------------------------------------------|------------------------|
| CLIENT | Box Hill School Trust Limited | Dorking |
| EMPLOYERS AGENT | Donovan Hewitt | Leatherhead |
| QUANTITY SURVEYOR | Chawton Hill Associates | Leatherhead |
| DESIGN & BUILD TEAM | Sunninghill Construction in conjunction with: Structural Engineer, Hall Davis Consulting Engineers M&E Consultant, Delta Green Environmental Design | Hinchley Wood Lewes |